



Ribbon Cutting Ceremony for Research Facility One held October 30, 2008



"The Gateway University Research Park is an outstanding collaborative venture between North Carolina Agricultural and Technical State University and the University of North Carolina at Greensboro that will provide an excellent economic boost to our community and state. This exceptional collaboration between these two outstanding public universities creates a unique win-win partnership that builds on their commitment to being more externally engaged.

The exciting focus of the Gateway University Research Park on science, nanoscience, technology, engineering, and mathematics takes full advantage of some of the remarkable strengths of both institutions. The involvement of our outstanding faculty, staff, and students in this collaborative venture builds confidence about the expected economic impact the Park will have on this region for years to come.

This research enterprise will lure high-tech scientists plus high paying jobs, new companies, spin-offs, research opportunities and innovation. Our collaborative results will truly affect the future of economic development and the viability and sustainability of the Piedmont Triad Region and beyond."

CHANCELLOR HAROLD L. MARTIN, SR.,
NORTH CAROLINA A&T STATE UNIVERSITY

South Campus



South Campus Master Plan



"North Carolina A&T State University and The University of North Carolina at Greensboro are working together to leverage their complementary research strengths and resources. Both of these institutions already play a critical role in the University of North Carolina system and in the life of our state, but with the combined brainpower and the new state-of-the-art facilities at Gateway University Research Park, and through public private partnerships, we know that they can become even greater institutions and contribute even more to the economic growth and competitiveness of North Carolina.

— TOM ROSS, PRESIDENT, UNIVERSITY OF NORTH CAROLINA



Research Facility One opened September 2008



Research Facility One

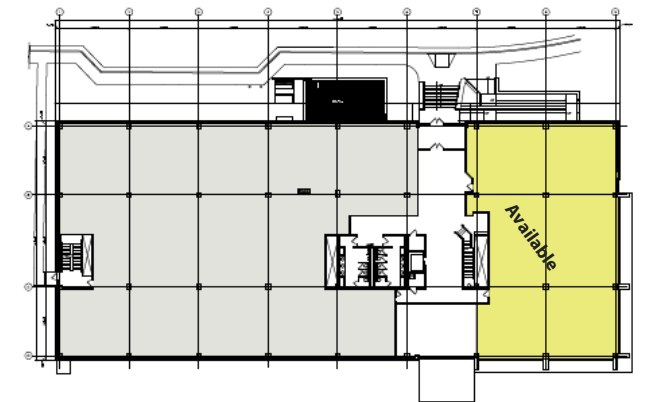
The first facility at the Gateway South Campus opened in September 2008. The building is 2½ stories and comprises 63,000 square feet.

The U.S. Department of Agriculture, Natural Resource Conservation Service, occupies the largest percentage of the building, occupying about 30,000 square feet. The Joint School of Nanoscience and Nanoengineering occupies more than 5,000 square feet as temporary quarters while their new facility is being constructed. Additional tenants include Advvero Technologies, Inc., Barton Malow Samet SRS, and Gateway University Research Park. A conference/training room is located on the second floor.

Gateway's South Campus is situated on 75 acres next to the pristine pastures of the North Carolina A&T State University farm. The campus is located near the I-40/I-85 corridor that runs from Washington, D.C. to the north and Atlanta, GA to the south.

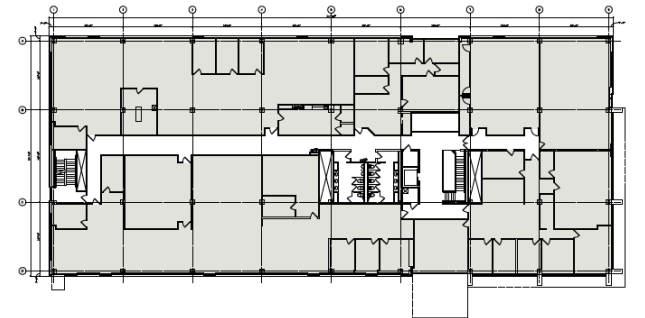
The South Campus Master Plan calls for multiple research facilities and will offer scenic landscaping, pedestrian-friendly walkways, sculpture gardens, an amphitheatre, auditorium, and a roof garden and patio.

First Floor:
Available Square Footage: ≈8,100 SF



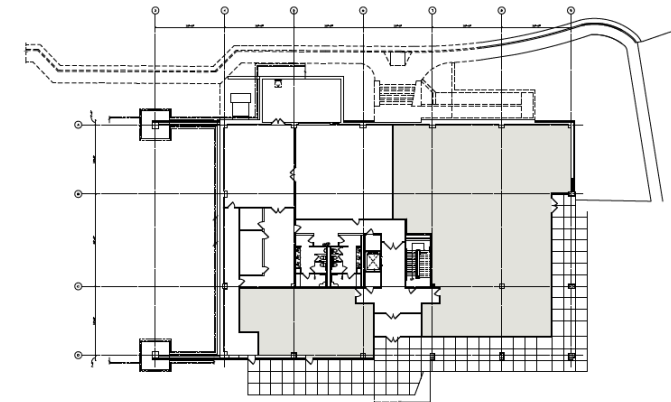
© 2008 Barton Malow

Second Floor:
Available Square Footage: 0



© 2008 Barton Malow

Ground Floor:
Available Square Footage: 0



© 2008 Barton Malow